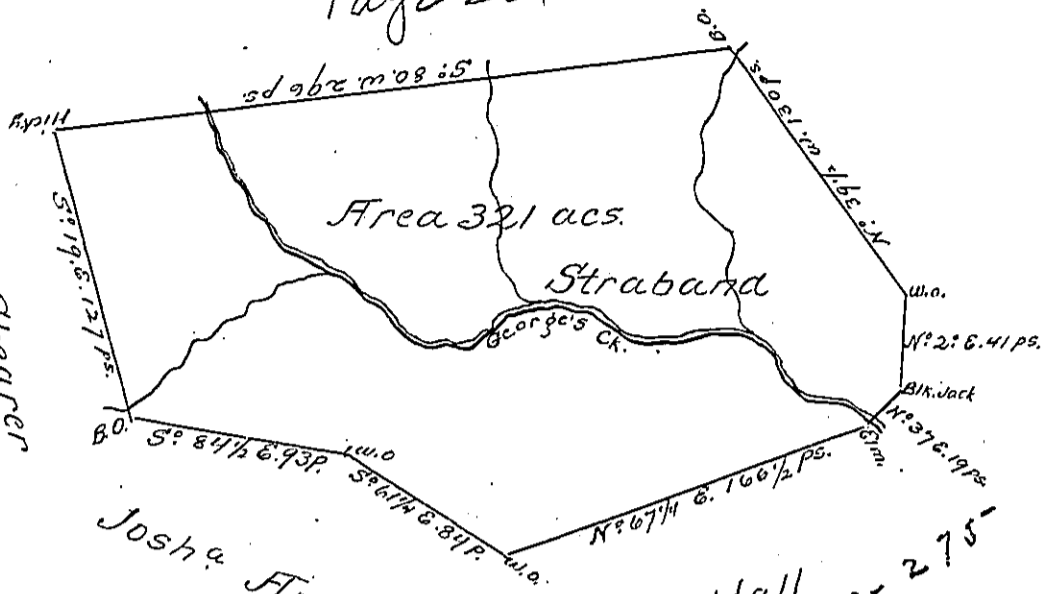


Saml. Agnew
Page 284

942-9100

Wm. Shearer



Josh & Anderson

Jno. Hall
C 193-275

942-167

A Draught of a Survey call'd "Strabard"
 lying on George's Cr. a Branch of Chartier's Cr. in
 Washington County, contg. 321 acs. with the usual
 allow^{ce} executed Apl. the 22d. 1786 in pursuance of
 a warrant in the name of Matthew Henderson
 (and assigned to Saml. Agnew) for 300 acs. dated
 Sept. ye 16-1785.

Presley Nevill } Dep.
 Mattw. Ritchie }

John Lukens Esqr. S. Genl.

IN TESTIMONY that the above is a copy of the original remaining on file in
 the Department of Internal Affairs of Pennsylvania, made
 conformably to an Act of Assembly approved the 16th day of
 February, 1833, I have hereunto set my Hand and caused
 the Seal of said Department to be affixed at Harrisburg,
 this fourth day of March 1902

James W. [Signature]
 Secretary of Internal Affairs.